



MORGAN ASSOCIATES

ESTATE & LETTINGS AGENCY



Keynsham Road,  
Cheltenham GL53 7PX  
Offers over £165,000



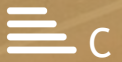
1



1



1



C

Keynsham Road,

Cheltenham GL53 7PX

A one bedroom apartment, in the superb location of Keynsham Road.

### Full Description

This first floor one bedroom, one bathroom apartment is located within a stone's throw to the Cheltenham Town Centre and General Hospital. With a proven history of successful rentals, this is a superb option for Landlords looking to expand their portfolio, first time Landlords, or for first time buyers wanting a convenient location in a spacious apartment.

With entrance hall, generous kitchen with ample space for dining table, bright sitting room, bathroom, double bedroom, and an off-road parking space - this is a property worth viewing.

### Further Information

Tenure: Leasehold - Share of Freehold

Lease duration: 966 years remaining.

Ground rent: Not applicable

Service charge: £1,418.16 per annum

Services: Mains electricity, water and drainage.

Council tax band: B

Local authority: Cheltenham Borough Council



# Floor Plan

## Swanbrook House

Approximate Gross Internal Area = 42.8 sq m / 461 sq ft

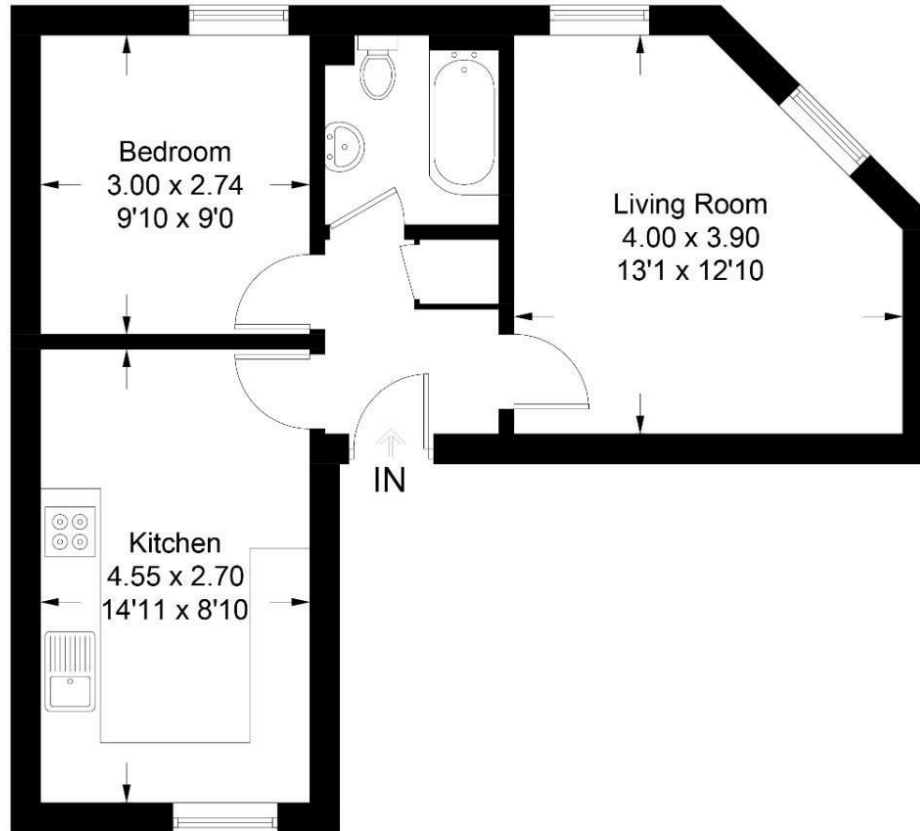
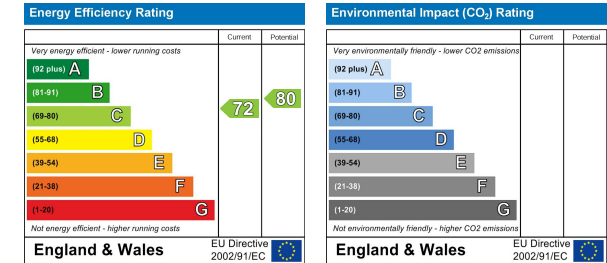


Illustration for identification purposes only, measurements are approximate, not to scale. floorplansUsketch.com © (ID1027991)

These particulars, whilst believed to be accurate are set out as a general outline only for guidance and do not constitute any part of an offer or contract. Intending purchasers should not rely on them as statements of representation of fact, but must satisfy themselves by inspection or otherwise as to their accuracy. No person in this firm's employment has the authority to make or give any representation or warranty in respect of the property.

# Energy Efficiency Graph



# Area Map



# Viewing

Please contact us on 01242 514 285 if you wish to arrange a viewing appointment for this property or require further information.

Rotunda Buildings Montpellier Exchange  
Cheltenham  
Gloucestershire  
GL50 1SJ

T. 01242 514 285  
E. sales@morgan-associates.co.uk  
W. www.morgan-associates.co.uk

